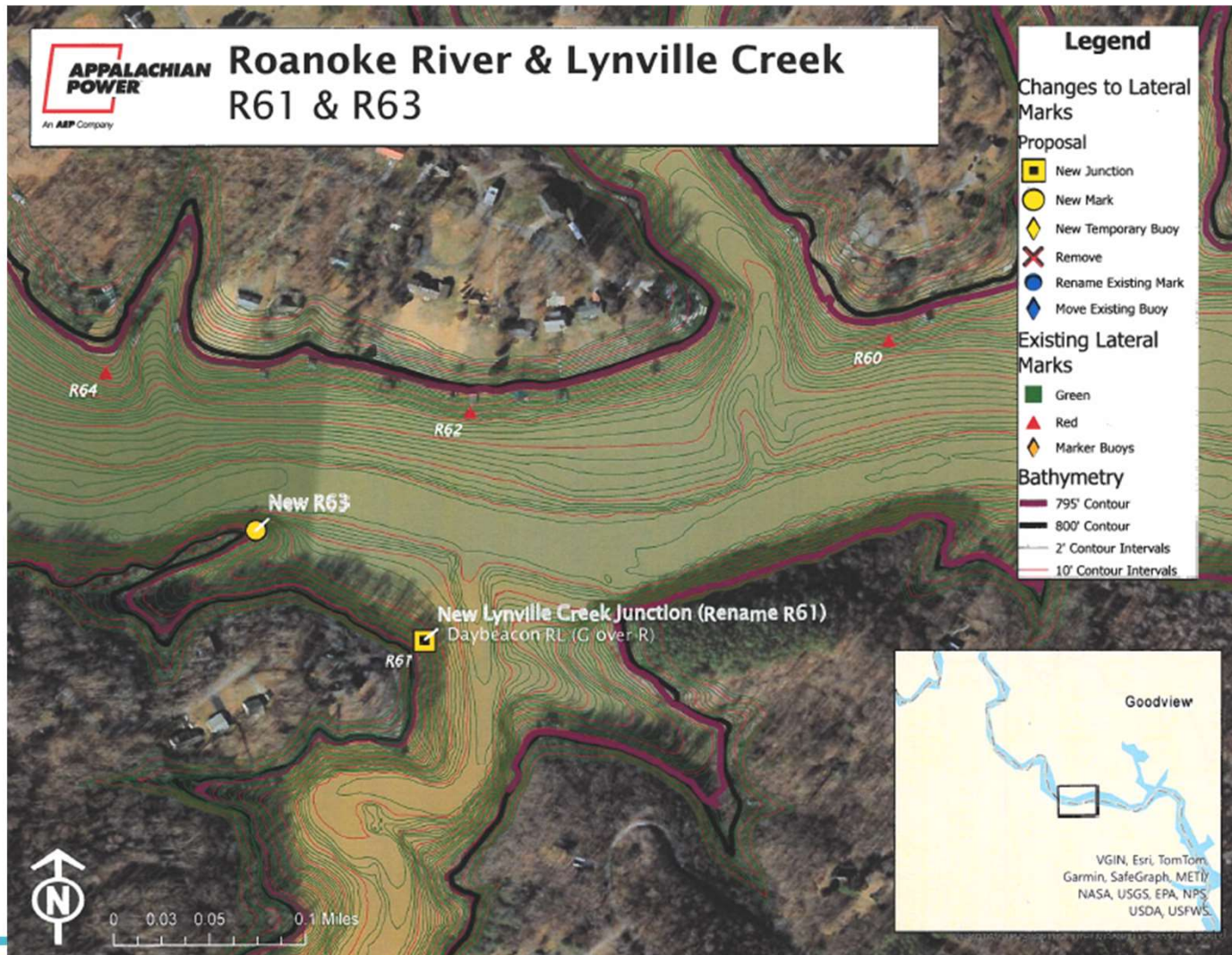


2025 SML Aids to Navigation (ATON) Update

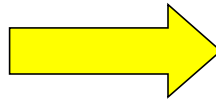
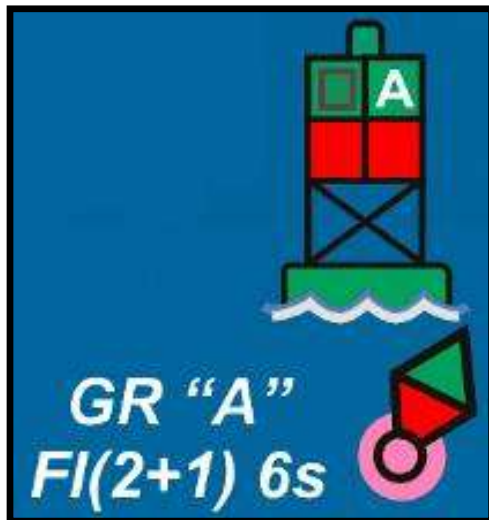
2025 SML Navigation Marker Update

- Faded Marker Replacement
- Introduction of the Preferred Channel Mark
- Some Shoal Markers Replaced by Lateral Markers
- Actions Targeted By June 1



Preferred Channel Mark

- Light is color of top band







Roanoke River & Indian Creek R37 & I1

Legend

Changes to Lateral Marks

Proposal

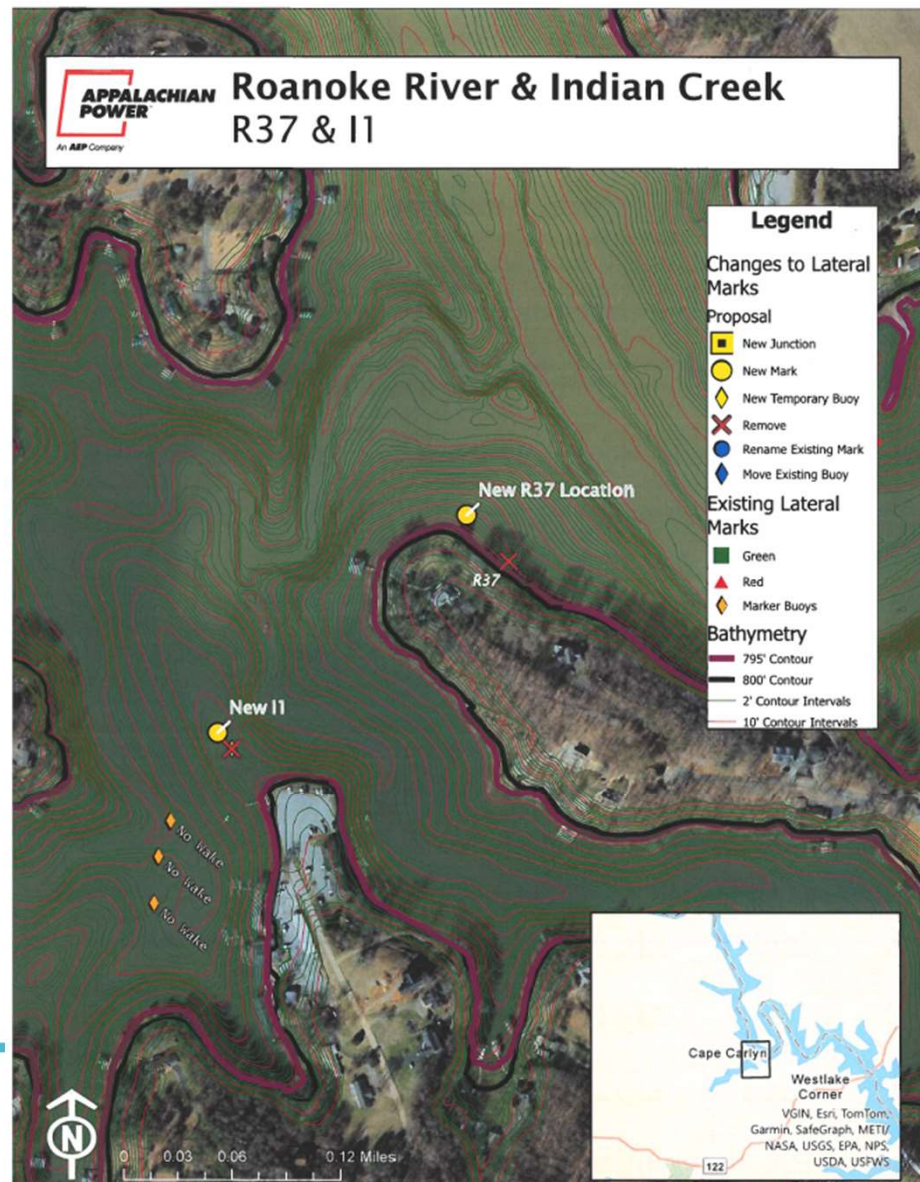
- New Junction
- New Mark
- New Temporary Buoy
- Remove
- Rename Existing Mark
- Move Existing Buoy

Existing Lateral Marks

- Green
- Red
- Marker Buoys

Bathymetry

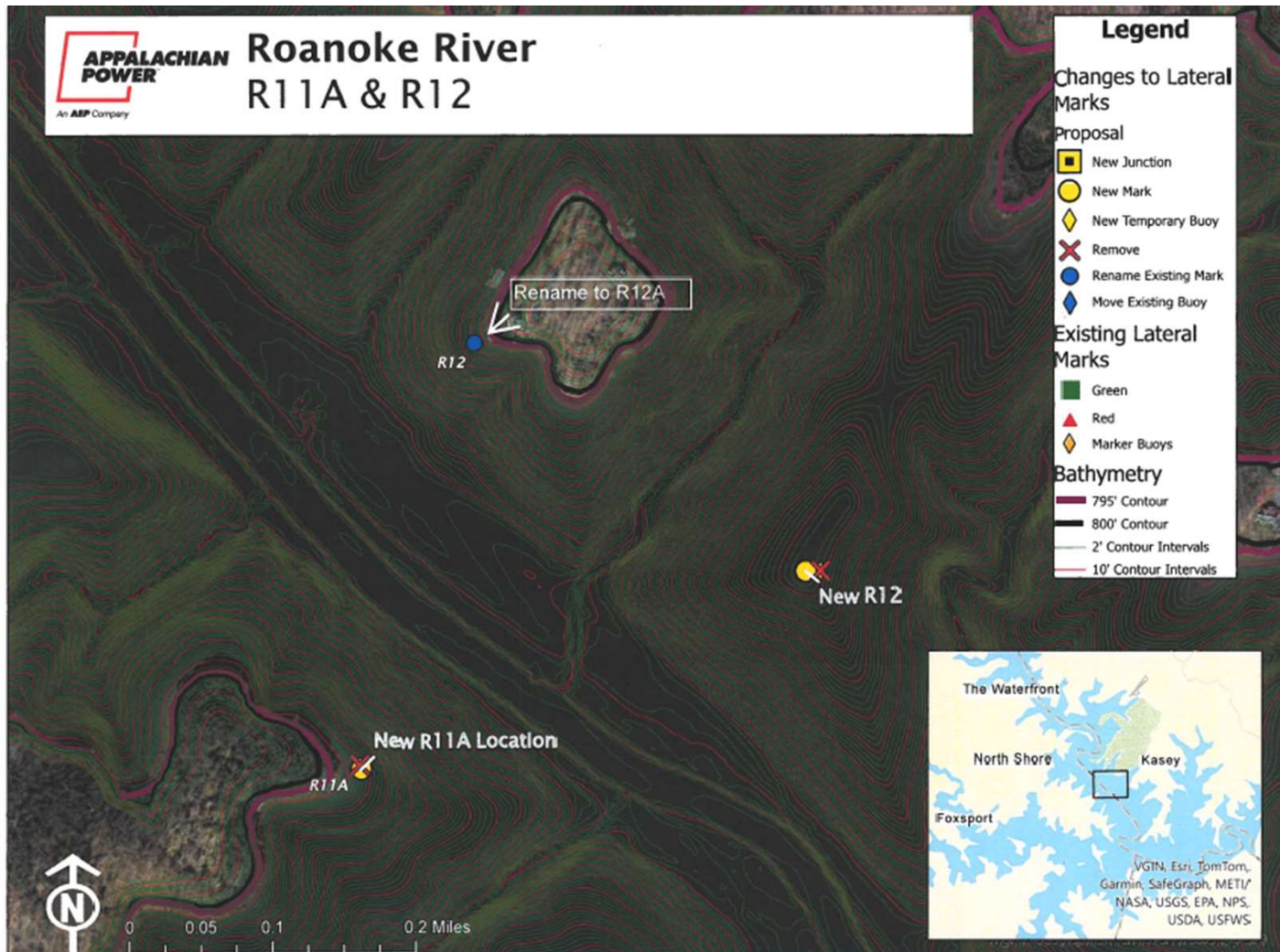
- 795' Contour
- 800' Contour
- 2' Contour Intervals
- 10' Contour Intervals

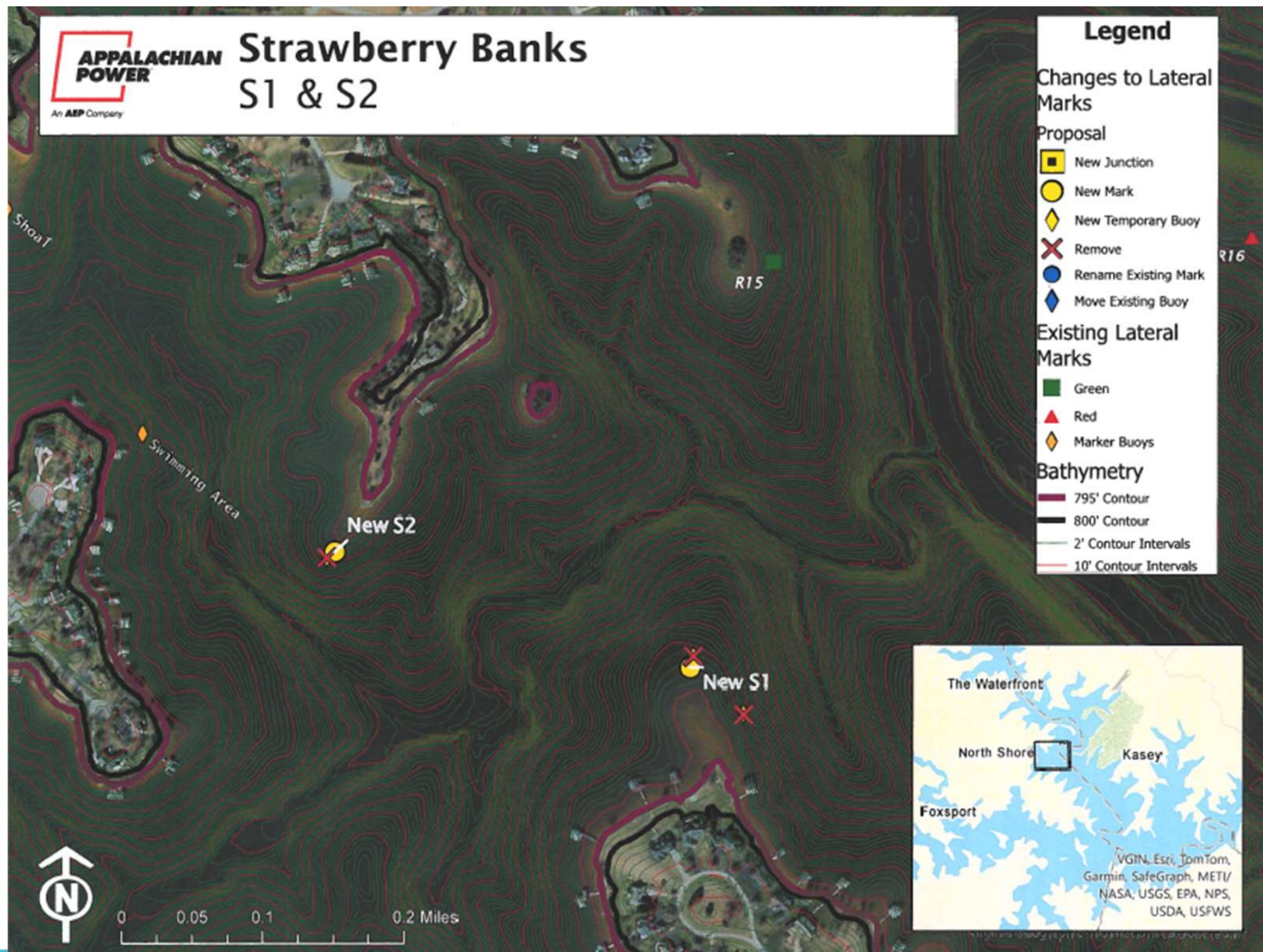




Upper Roanoke River R33









Blackwater River & Cool Branch B5, B7, & CB2

Legend

Changes to Lateral Marks

Proposal

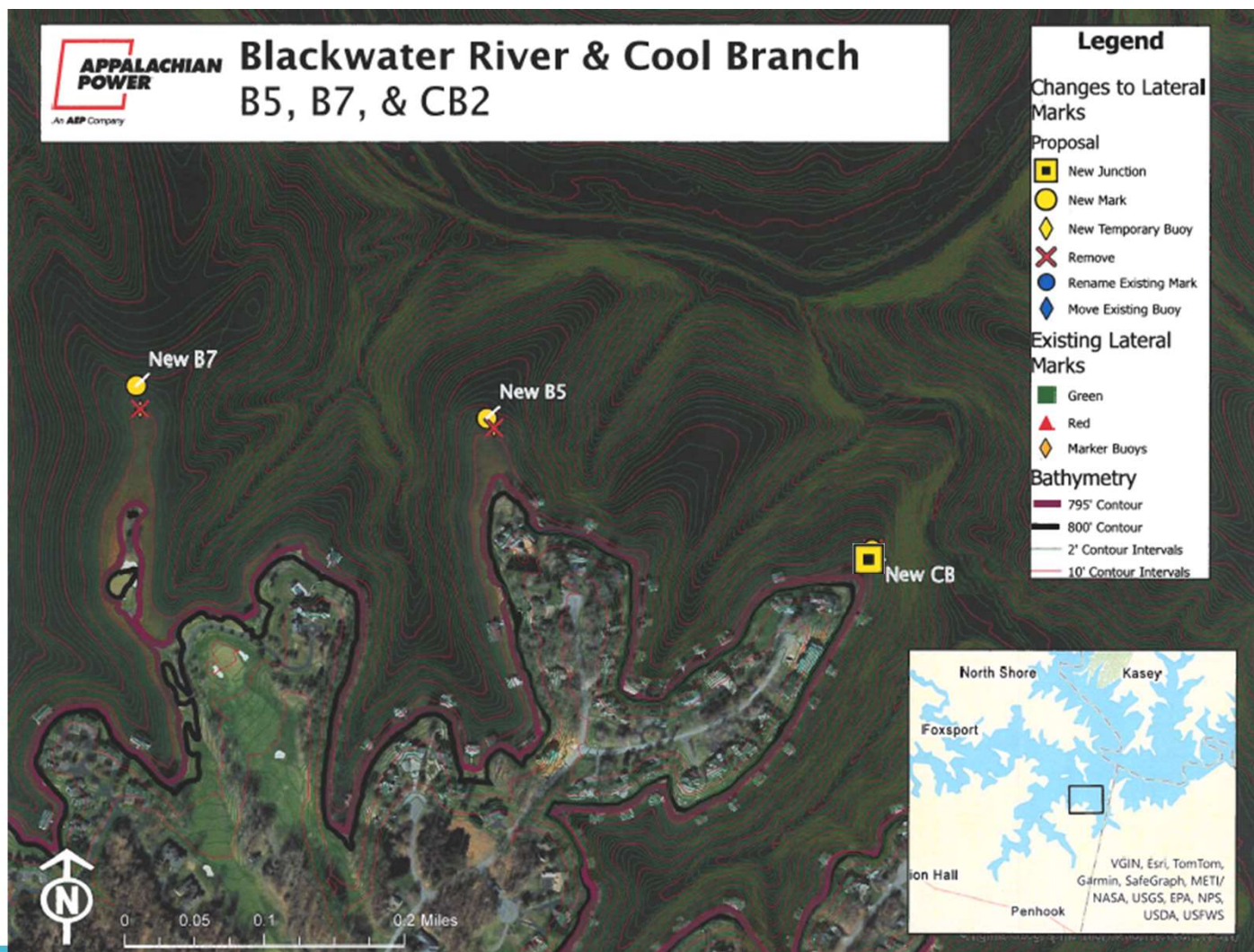
- New Junction
- New Mark
- New Temporary Buoy
- Remove
- Rename Existing Mark
- Move Existing Buoy

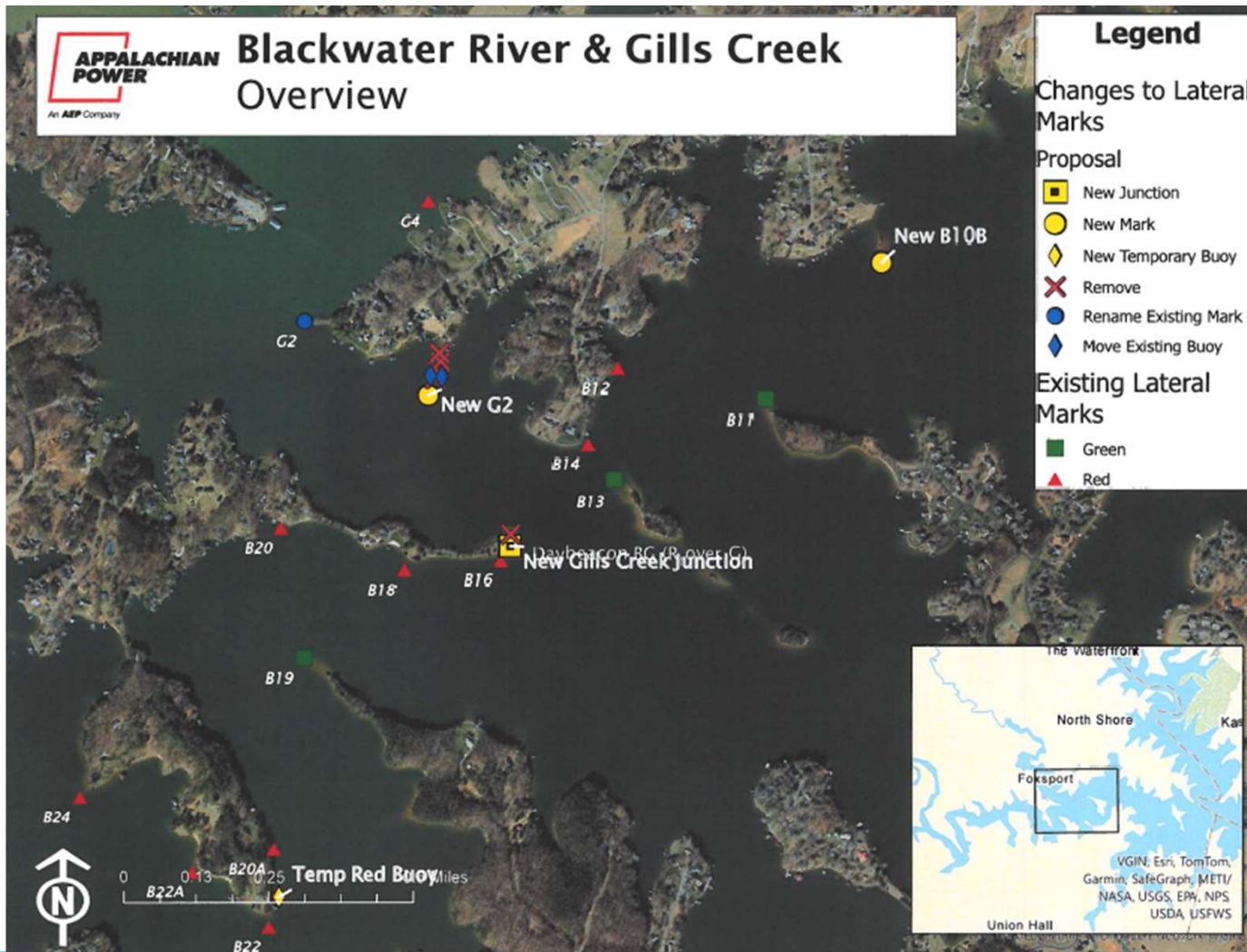
Existing Lateral Marks

- Green
- Red
- Marker Buoys

Bathymetry

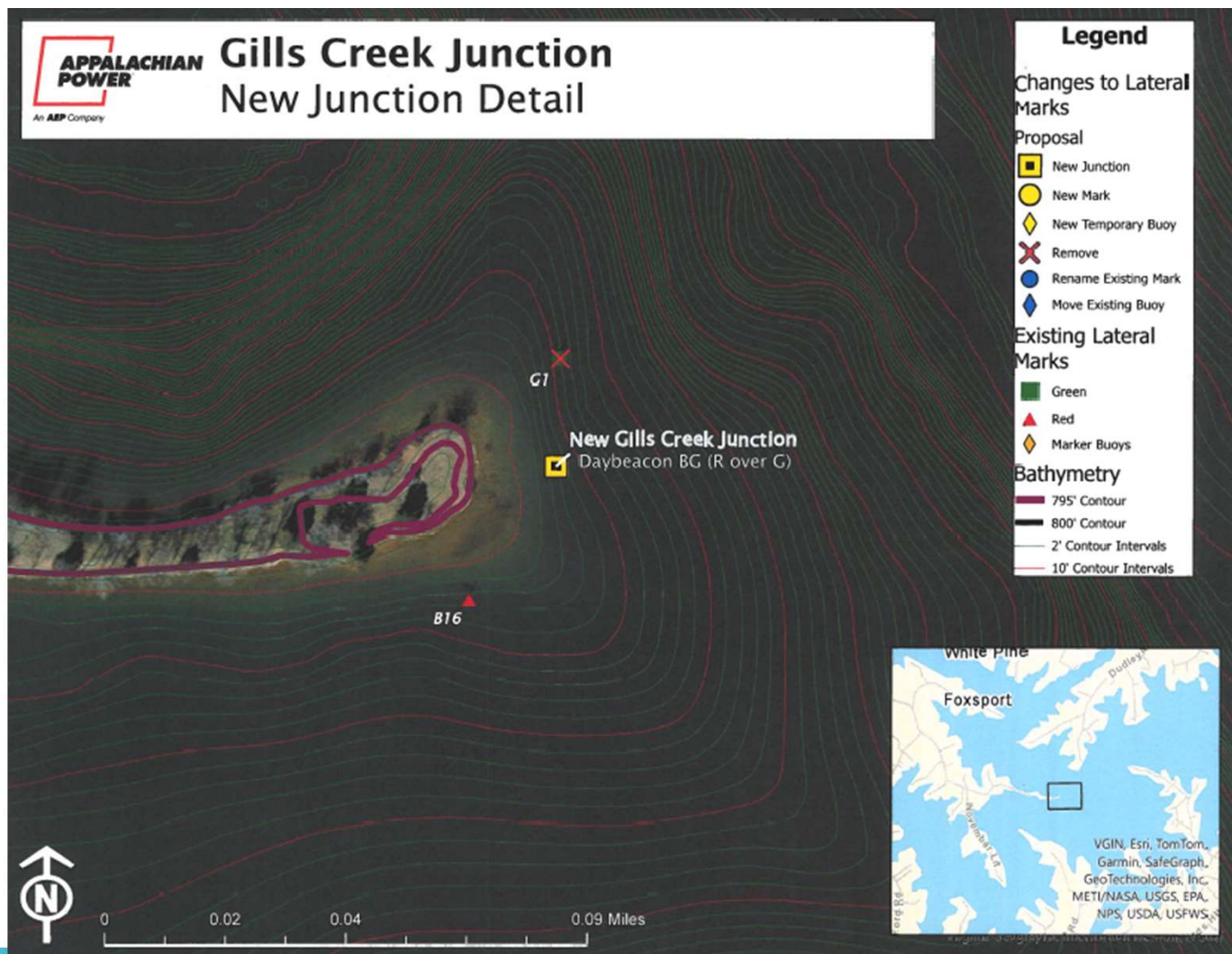
- 795' Contour
- 800' Contour
- 2' Contour Intervals
- 10' Contour Intervals







Gills Creek Junction New Junction Detail





Gills Creek G2 & G2A

Legend

Changes to Lateral Marks

Proposal

- New Junction
- New Mark
- New Temporary Buoy
- Remove
- Rename Existing Mark
- Move Existing Buoy
- Marker Buoys

Bathymetry

- 795' Contour
- 800' Contour
- 2' Contour Intervals
- 10' Contour Intervals

Rename to G2A

Move Shoal Markers to Straddle Rock

New G2



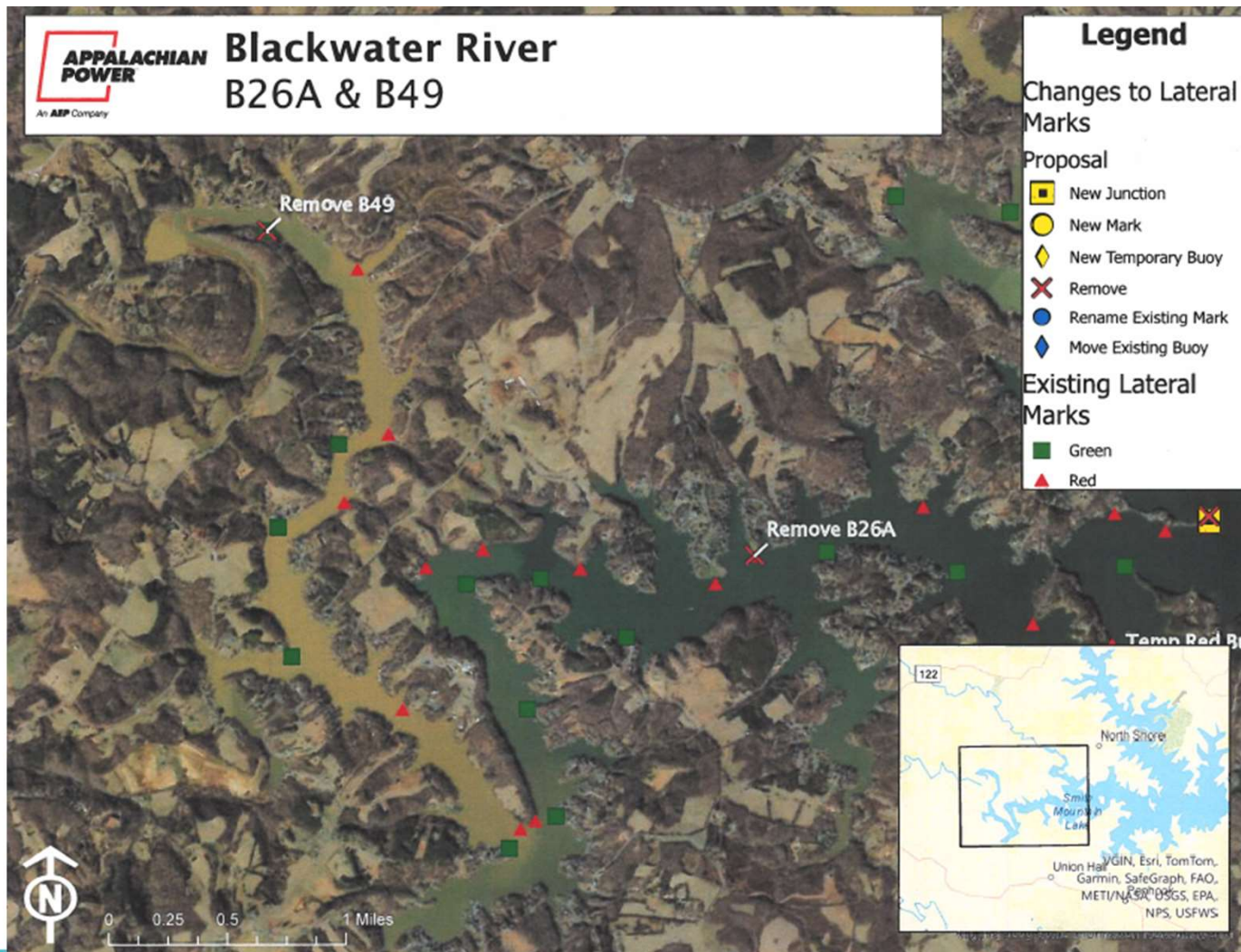
0 0.05 0.1 0.2 Miles



AMERICA'S BOATING CLUB
UNITED STATES POWER SQUADRONS®

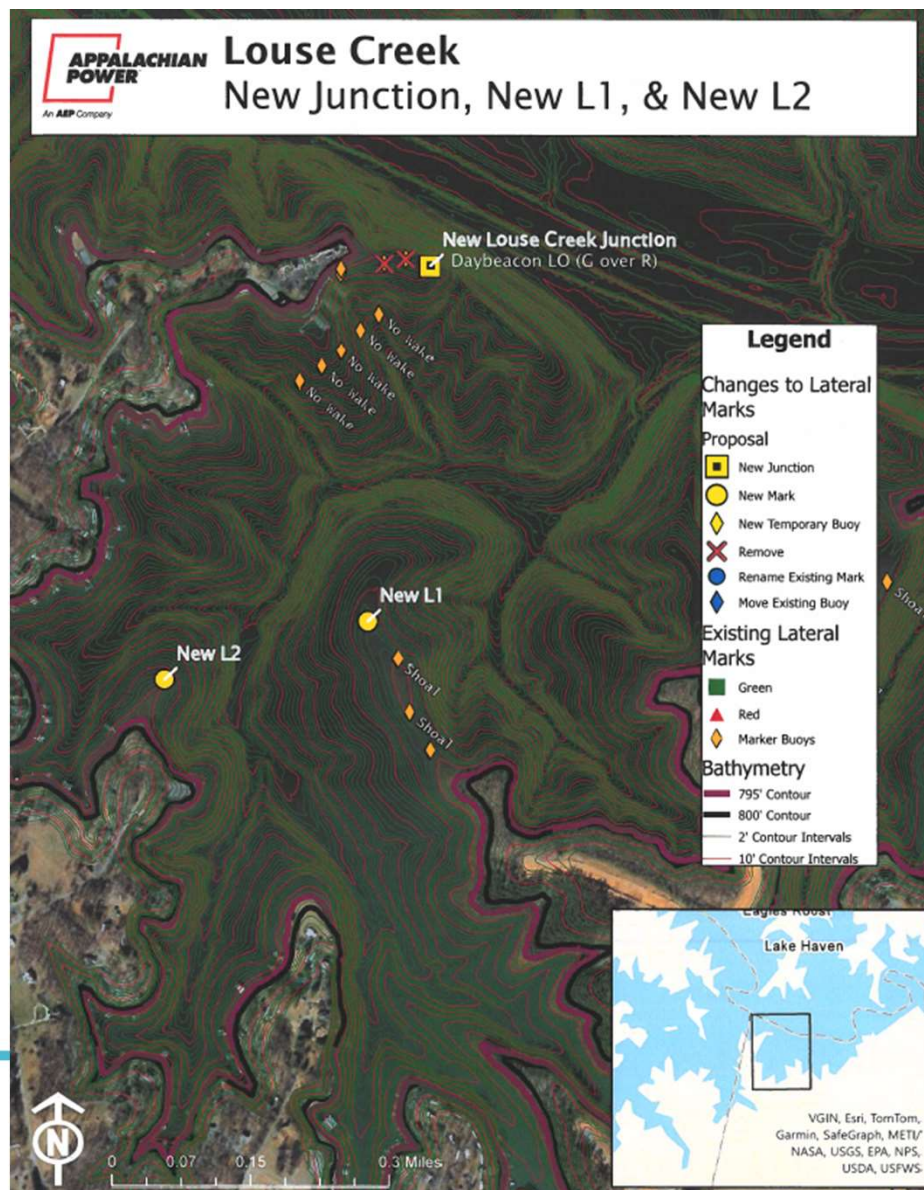


Blackwater River B26A & B49



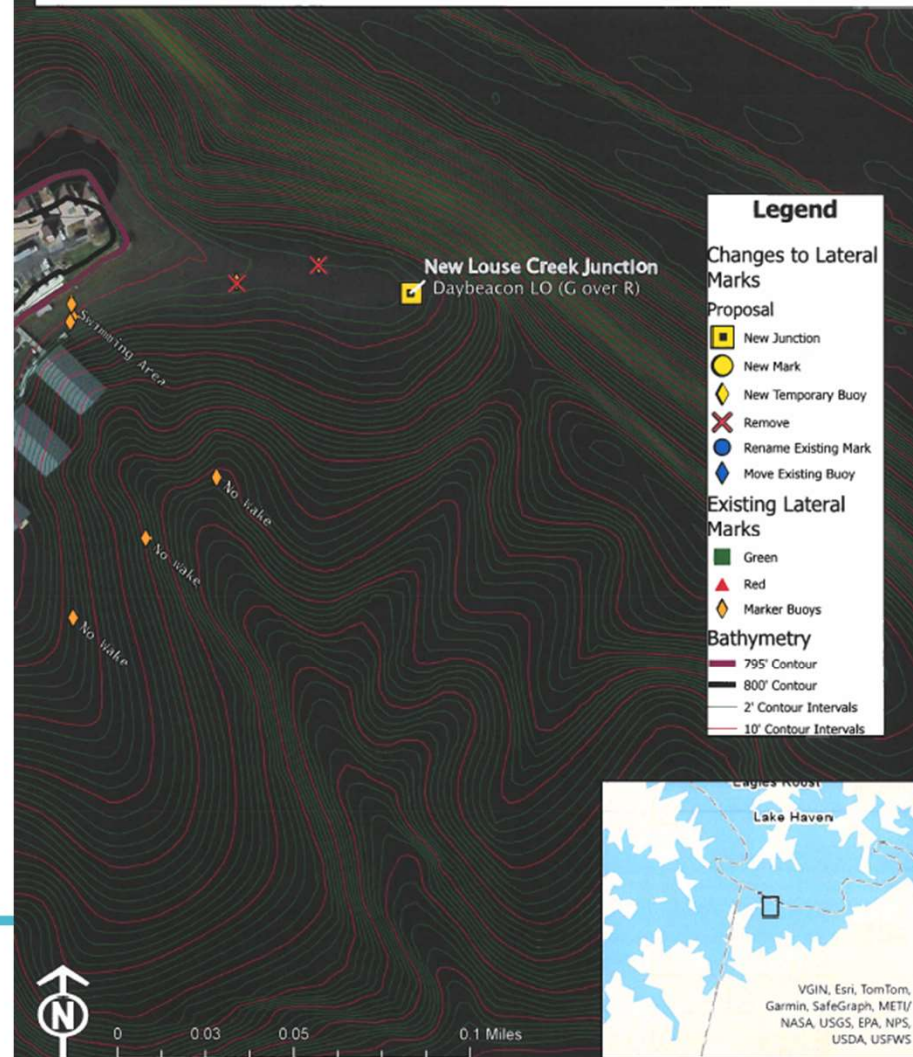


Louse Creek New Junction, New L1, & New L2





Louse Creek New Junction Detail





Craddock Creek C2A & C2B

